



NH3LgPV-C(D) 1500V DC 400A-630A

Photovoltaic Fuse

光伏熔断器



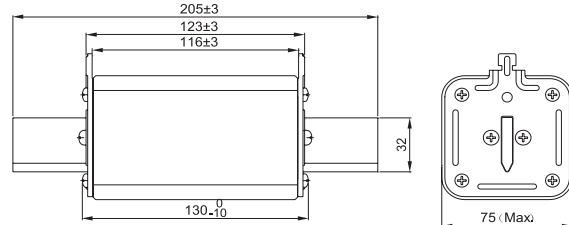
Standard/ 标准: IEC 60269-6, UL 248-19, GB/T 13539.6

INTERRUPTING CAPACITY/ 分断能力:
50,000 A at 1500V DC

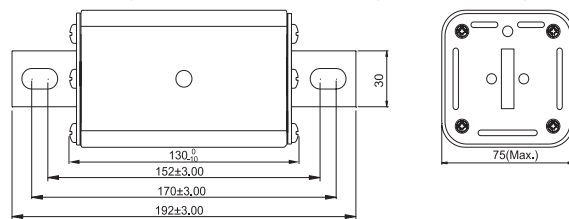
Dimensions/ 尺寸:

Unit 单位: mm

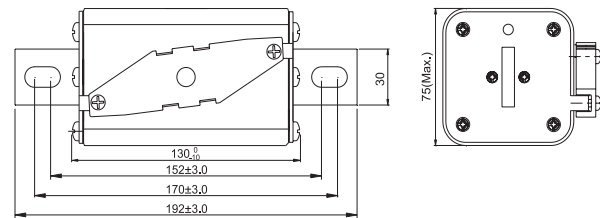
Type:NH3LgPV-C Part No.:3LgPV(amp rating)U15C/C2



Type:NH3LgPV-D Part No.:3LgPV(amp rating)U15D



Type:NH3LgPV-D Part No.:3LgPV(amp rating)U15DC



TECHNICAL PARAMETERS/ 技术参数:

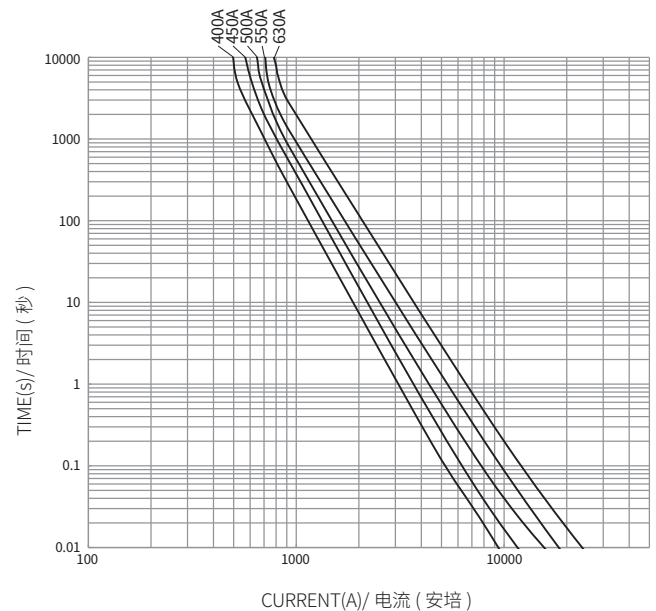
PART NO. 目录编号	CURRENT RATING 额定电流	SAFETY APPROVALS 安全认证	
		cULus	TUV
3LgPV400U15C/C2	400A	○	○
3LgPV400U15D/DC		●	●
3LgPV450U15C/C2	450A	○	○
3LgPV450U15D/DC		●	●
3LgPV500U15C/C2	500A	○	○
3LgPV500U15D/DC		●	●
3LgPV550U15C/C2	550A	○	○
3LgPV550U15D/DC		●	●
3LgPV630U15C/C2	630A	○	○
3LgPV630U15D/DC		●	●

C- 触刀安装带中央指示器 blade contacts with the center indicator
 C2- 触刀安装带中央指示器和顶部指示器 blade contacts the central indicator and The top of the indicator
 D- 螺栓连接 bolted connections
 DC- 螺栓连接带微动开关底座 bolted connections with microswitch base
 C、C2-Optional 可选择
 D、DC -Optional 可选择

U15 DENOTES FOR 1500V DC U15 表示 1500V DC
 ● DENOTES FOR APPROVAL ● 表示已取得安全认证
 ○ DENOTES FOR PENDING ○ 表示正在申请安全认证

NH3LgPV-C(D) 平均 I-T 曲线图 (仅供参考)

NH3LgPV-C(D) AVERAGE I-T CHARACTERISTICS CURVE (FOR REFERENCE)



PART NO. 目录编号	Optional Accessory 可选配件	
	Fuse Holders 熔断器座	Microswitches 微动开关
3LgPVXXXU15C	NH3LBU15	/
3LgPVXXXU15C2	NH3LBU15	HMT-01
3LgPVXXXU15DC	/	HMC-01